

What's up

ISSUE # 5

ACCESSMAN NEWSLETTER

accessman

MAKING HEIGHT EASY

Going Above and Beyond the Call of Duty



ASB Classical Sparks is an annual outdoor concert held in Hagley Park North in Christchurch and attended by over 100,000 people each year. This year they wanted to do things differently; they wanted to find a way to position the Christchurch Symphony Orchestra Conductor in an elevated position in front of the stage without blocking the view for audience members.

An Accessman Knuckleboom was selected as the machine offering the best solution; the unit could be parked to the side of the stage while the telescopic boom would provide a quick and easy way to position the Conductor above the audi-

ence but still within easy view for the musicians. The standard Knuckleboom basket set-up however was restrictive in two key areas; access to the basket and the Conductors arm mobility once standing in the basket.

As Accessman are fully supported by a team of specialists with their own workshop in Christchurch they were easily able to replace the entry to the basket with a workable gate and move the control panel to increase the area available for arm movement. The Conductor visited the Accessman workshop to test the new design and then a safety certificate was obtained for the new set-up to ensure that it complied with national OSH standards.

"Accessman went beyond the call of duty to help create a suitable space for the Conductor to perform. They offered creative solutions and suggested ways to alter the set-up of the basket, without compromising safety" Sheena Baines from the Christchurch City Council Events Team said.

Baines went on to say that *"We were impressed by their willingness to listen to our needs and the evident sense of pride they take in their business. Their machines were clean and well maintained which was important to us and the overall image of our event"*.

We are dedicated to finding customers the right machine for their job, they will listen to requests and they will do whatever it takes to deliver a safe and efficient working environment.

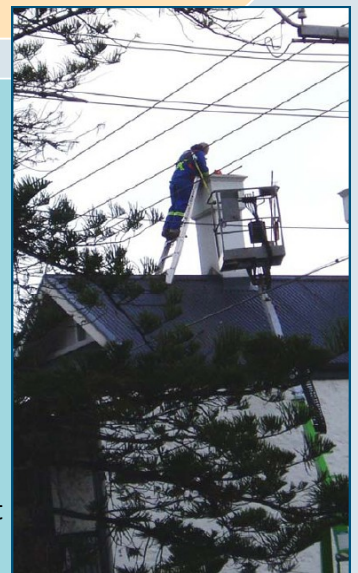
Newly renovated www.accessman.co.nz now has everything you need! You can now find the specifications on every type of machinery we have available in our fleet, reach diagrams for machines, operator manuals, safety induction cards, Silvercard Training information and much more!

*Check out our new website, send an email to your local region from 'Contact Us' or your branch's page and you could **win a site shout!** Remember to include your name, site details and contact details in the message. Entries close Friday 3rd September*

Safety Tip #5 - Plan Right

Make sure you get the right machine that is going to get you to the correct height! And never leave your safety basket when using access equipment.

Accessman offer FREE site visits to help ensure that you get the right machine the first time!



Accessman Golf Tournament goes National in 2010

Accessman staff have had a busy start to 2010 with a number of golf tournaments being held up and down the country. We had a total of 5 Golf Classic's. They were all a great success and we managed to have perfect weather for everywhere except Dunedin, who were postponed due to a Hail Storm! Many a beer was consumed on the course, for some making improvements to their shots. Each of the winning pairs from our Regional Tournaments were invited to compete and represent their regions in the National Tournament which was hosted at Clearwater Resort, Christchurch.

Congratulations to the winners Richard and Darryl - representing HRS Construction, Christchurch and Matt and Tony - representing Mainzeal, Wellington who were the runners up in the National Tournament. Thanks to all our customers that made the effort to come to one of our tournaments.

We hope you enjoyed it and we will see you again next year.

accessman 

ACCESSMAN GOLF CLASSIC



Representatives from each of the regions in the National Golf Tournament ready to tee off

Gwab that Wabbit

Dunedin Branch Manager, Gavin Knox, found himself in an unusual situation recently at the Otago Settlers Museum site. Gavin was on site doing his regular checks on the machines when a rabbit jumped out of one of the machines and another person on the site noticed it underneath the scissor lift.



They tried driving the machine forward to scare off the rabbit but it just walked along with the machine, maintaining its position. They managed to get it out by using a piece of wood and guiding it out but... this sent the rabbit running around the site. The rabbit was chased by about 9 builders until it was caught and one of them has taken it home as a friend to his own rabbits.



Turns out the rabbit was just trying to keep warm on the cold Dunedin nights. When the machines are plugged in to charge at the end of the day, the batteries warm up and there was a wee shelf for him to comfortably sleep on. During the day he would just ride around in the scissorlift with out anyone knowing he was there.



Rising to the Occasion at Forsyth Barr Stadium

Below is a shot of one of our 41 metre self propelled Knucklebooms in action at the new stadium in Dunedin.

Currently on site we have 2 x 41m Knucklebooms as well as various other machines ranging from a one man personnel lift to our popular HR21 Knucklebooms. The project is due to finish in time for the 2011 World Cup.

